

SID Panel Repair by Leon Murphy

Remove SID Unit, I found by removing the 2 switch blanks next to SID I could push panel out from behind



Press in plug retention clip as shown, and lift plug at a right angle



Pull cable plug to 90 degrees and remove



There are 4 Torx8 screws to be removed to gain access to the SID internals



Once you have removed the 4 screws, carefully pull up the connector housing cover



There are now 4 press tabs to be released around the units fascia, carefully push these down using a small flat blade screwdriver, at the same time applying pressure to remove the units back housing



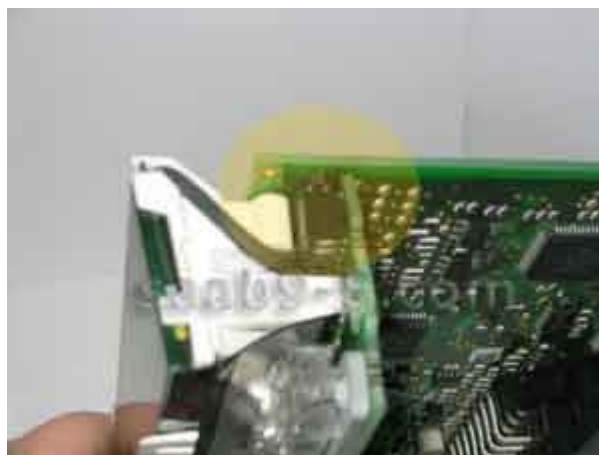
The housing should pull cleanly off easily, if its tough, check all press tabs are released!



There are now another 3 screws to remove, once removed the actual LCD panel and board can be separated from fascia



Now you will need to very carefully separate the LCD panel from the main PCB, there is a plug on one corner, remove carefully so not to suddenly pull apart and damage ribbon cable!



Now carefully lay the 2 parts apart on some anti static foam/mat, this will reveal the ribbon cable, the most common cause of SID failures



Using something reasonably blunt (I found biro worked well) apply pressure along each contact of the ribbon cable, this will hopefully realign any lost contact



Now once you've gone across all contacts, carefully reassemble the unit, on re-assembly I also fitted a piece of card between the LCD panel/ribbon contacts and main PCB. Also ensure the PCB slides into the guides of the back cover.



And hopefully the end result will look something like this!



© saab9-5.com